

01 Floor size: 8,439 sq ft

02 Indicative meeting space

BUREAU

FLOOR ONE

First among equals

Firstly, let's take the time to clarify a small but important difference in British and American English: the naming of floors in a building. In Britain, the floor of a building at street level is called the ground floor. The floor above it is the first floor and the floor below is called the basement. In America however, the floor at street level is usually called the first floor. Go up one floor and you are on the second floor (which, of course, is the first floor for the British). The floor below street level is called the basement, the same as in Britain.

You could say that our first floor, with its unique vantage point over the Lobby entrance, is the look out or masthead of Bureau. As it also enjoys a prominent position over the artwork installed by leading British artist and designer, Paul Cockledge. It certainly enjoys a distinguishing and distinctive perspective on the value of culture.

FLOOR ONE

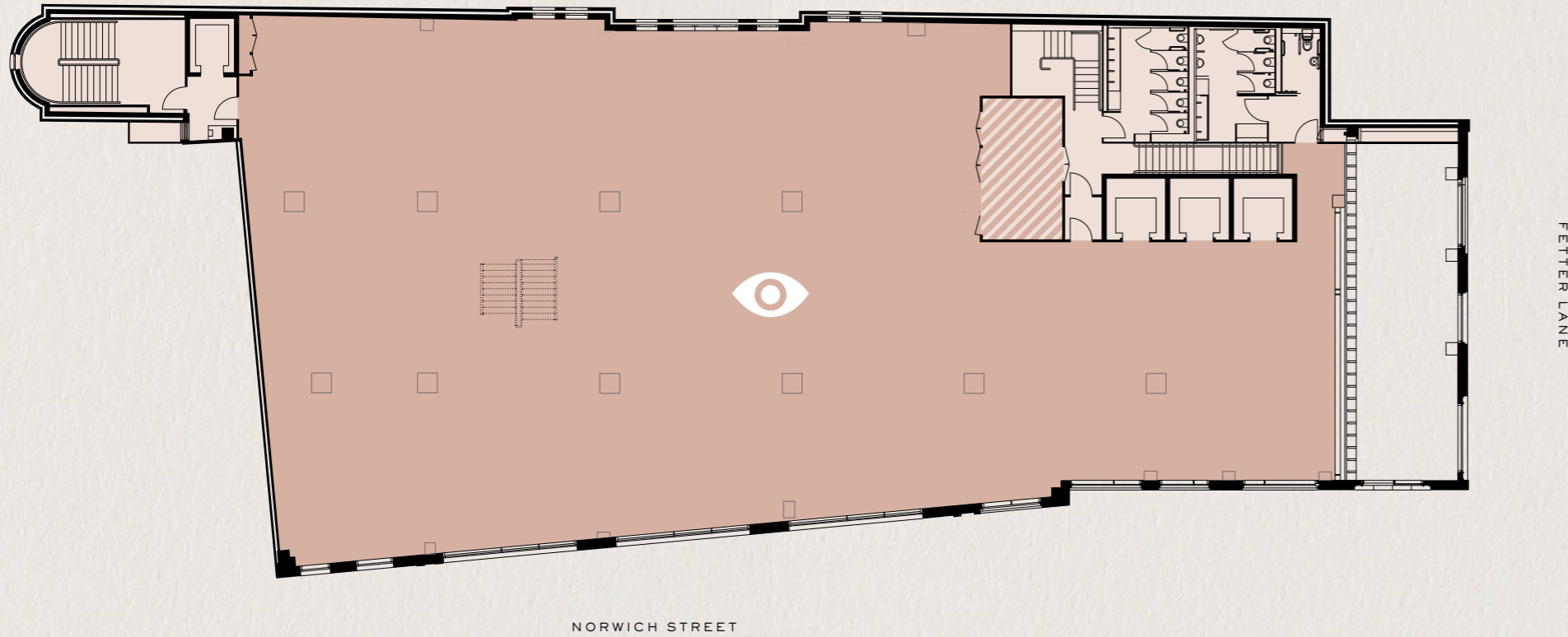
B U R E A U



FLOOR ONE

Office

8,439 sq ft



- Office
- Common Parts
- ▨ Service Riser
- ⊙ Indicative location of staircase



03 Enjoys views over Lobby