



01 Floor size: 9,217 sq ft

02 Indicative break space

BUREAU

FLOOR FOUR

Apples and pears

We set out with the intention for this building to be amongst the best in London. During the design phase, a key part of the brief to our architects was to glorify the staircase that works its way up from the Lobby. Carrara marble and inlaid fumed oak make the journey to the fourth floor a truly delightful one.

Also a beneficial and worthwhile one. Our scientific advisors here at Bureau tell us that to expend the maximum number of calories when climbing a set of stairs the single-step strategy is better. This is because although two step climbing invokes a higher rate of energy expenditure, one step climbing is energetically more expensive in total over the entirety of a stairway.

With a recommended floor occupancy ratio of 1:8 at Bureau, you may have up to 100 colleagues on this floor also appreciating this very same fact.

FLOOR FOUR

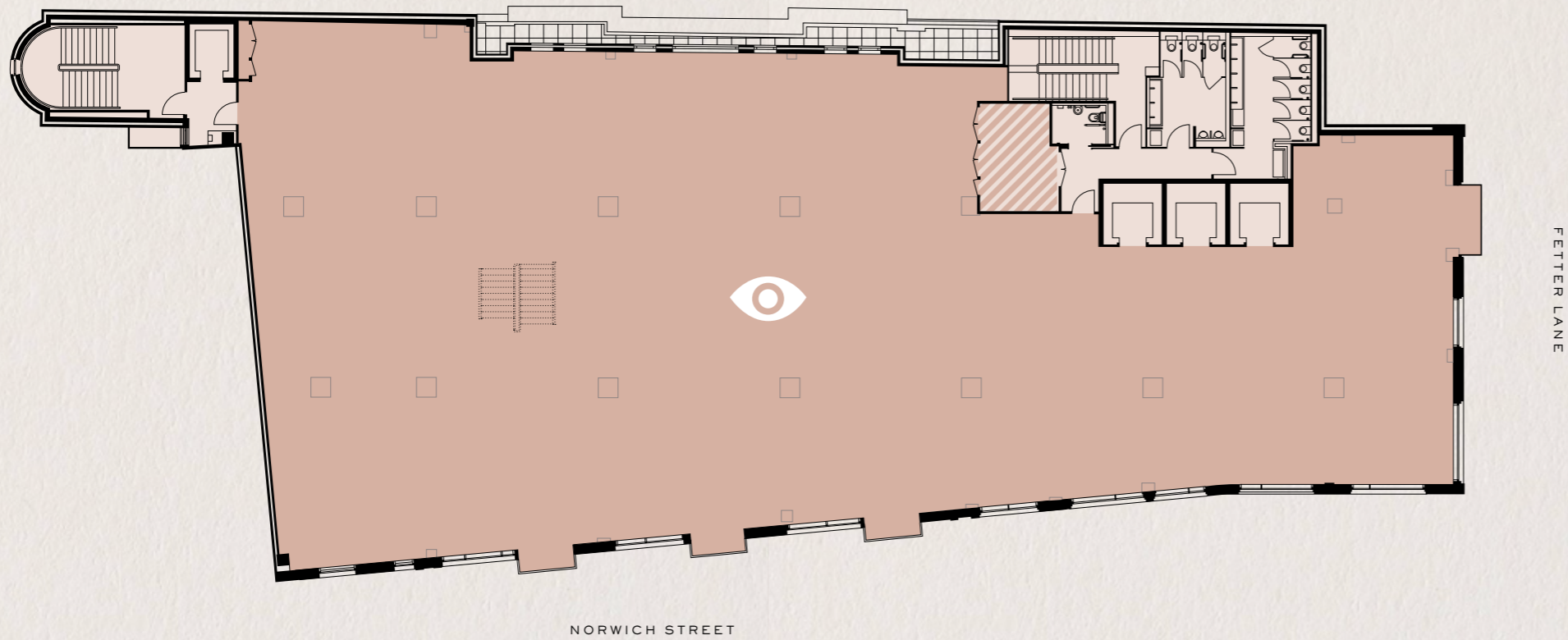
BUREAU



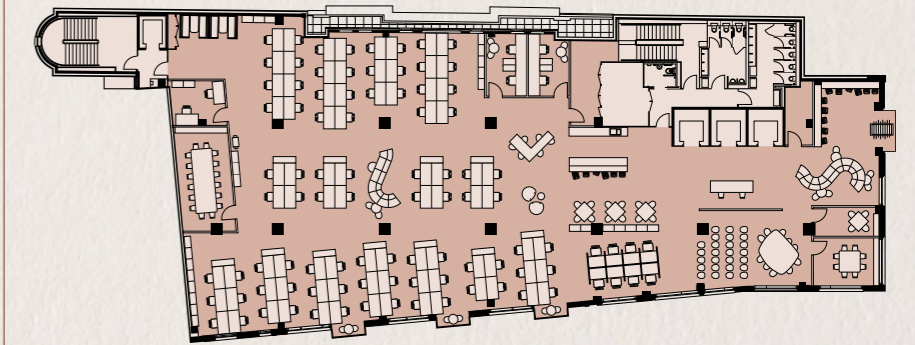
FLOOR FOUR

Office

9,217 sq ft



- Office
- Common Parts
- Service Riser
- Indicative location of staircase



CREATIVE / MEDIA

MEETING ROOMS

4 person meeting room	1
8 person meeting room	1
16 person meeting room	1

PERSON

3 x 2 person office	6
Open workspace	96
Total	102
Density	1:8